

# Simple Installation Guide

EcoBidet  
Series

The  
BIDET  
SHOP

You will need the following Tools:

MULTI-GRIPS OR SPANNER,  
BOLT TOOL AND A TOWEL

In the  
Box



PARTS YOU WILL NEED



REMOVE EXISTING SEAT AND LID



TURN THE WATER OFF



FLUSH THE SYSTEM



DISCONNECT BRAIDED HOSE



CONNECT BACKFLOW DEVICE



CONNECT T-PIECE ADAPTOR



CONNECT WATER HOSE TO T-PIECE ADAPTOR



CONNECT FILTER TO T-PIECE ADAPTOR



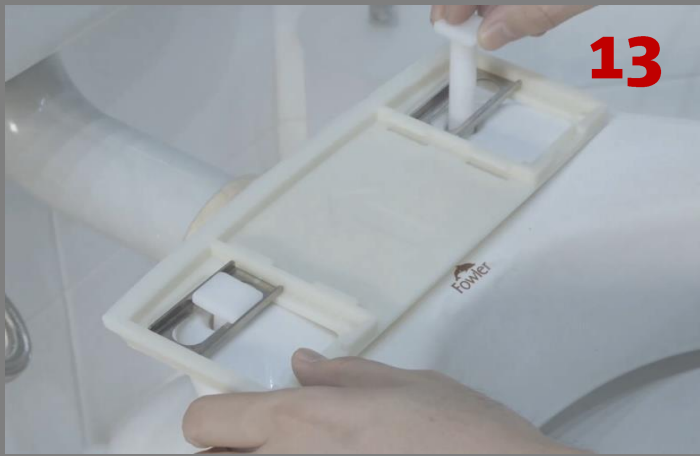
CONNECT BRAIDED HOSE TO FILTER



PLACE BASE PLATE ON CISTERN



PLACE SEAT BOLTS THROUGH SLIDERS  
AND BASE PLATE



**13**



**14**

SECURE BOLTS WITH NUTS



**15**

USE BOLT TOOL TO SECURE BOLTS



**16**

ATTACH BIDET TO BASE PLATE



**17**



**18**

CONNECT BRAIDED HOSE TO BIDET



**19**

CONNECT BRAIDED HOSE TO BIDET



**20**

21



TURN ON WATER

22



TURN ON POWER

### Installation & Backflow Requirements

This device must be installed in accordance with AS/NZS 3500.1

**Spare Parts:** If spare parts (shown in user guide) are needed please contact our help desk

**Filters:** Manufacturer recommends water filters be replaced every 6-8 months

**Please call the helpdesk on 1800 243 387 or 07 5591 7744 for any queries**

Model name	EcoBidet
Power rating	220 V - 240 V~ 50 Hz, 60 Hz
Power consumption	850 W
Operating Water Pressure	110 KPa - 680 KPa
Operating Temperature	0°C- 40°C



THIS DOUCHE SEAT IS SUPPLIED WITH A BACKFLOW PROTECTION DEVICE COMPLYING WITH AS/NZS 3500.1.  
NO FURTHER BACKFLOW PREVENTION IS REQUIRED FOR CONNECTION TO THE WATER SUPPLY. WMTS-051:2016